

MANL

39th AGM & Conference

HERITAGE TOURISM:

Experience Museums

Save The Date

OCTOBER 25 - 26, 2019

Exhibition Revamp

Mary March Provincial Museum

SEE ARTICLE ON PAGE 9



Summer
2019

Vol. 37, No. 2

NEWSLETTER

A Publication of the Museum Association of Newfoundland & Labrador



Cover Photo Caption: The refreshed and revamped parlour diorama at the Mary March Provincial Museum. Cover Photo Credit: Courtesy The Rooms

MANL's 39th AGM &
Conference.
October 25-26, 2019

6

Congratulations
MANL
Members!

10

Museum Day
Newfoundland &
Labrador

12

BOARD OF DIRECTORS 2018 - 2019**EXECUTIVE OFFICERS:****President**

Teresita McCarthy, Bell Island Community Museum

Vice President

Linda Hickey, Bell Island Community Museum

Secretary

Joan Kane, Trinity Historical Society

Treasurer

Julie Pomeroy, Town of Portugal Cove-St. Philip's

Past President

John Griffin, The Goulds

REGIONAL DIRECTORS:**St. John's**

Donna Norvey, St. John's

Avalon

Beverley King, Wooden Boat Museum of NL

Eastern

Edna Penney, Arnold's Cove Heritage Foundation

Central

Margaret Scott, Grand Falls-Windsor Heritage Society

Western

Nadine Osmond, Southwest Coast Historical Society

Labrador

Kyle Crotty, Nunatsiavut Government

MANL STAFF**Executive Director**

Ken Flynn (kflynn@nf.aibn.com)

Outreach Officer

Anne Madden (manl@nf.aibn.com)

Cover Photo Caption: The refreshed and revamped parlour diorama at the Mary March Provincial Museum.**Cover Photo Credit: Courtesy The Rooms****Articles can be submitted to:****MUSEUM ASSOCIATION OF NEWFOUNDLAND & LABRADOR**

P.O. Box 5785, St. John's, NL, A1C 5X3

PH: (709) 722-9034 • FX: (709) 722-9035 • E-mail: manl@nf.aibn.com

Web: <http://www.manl.nf.ca>Office Hours: Monday to Friday, 8:30am to 4:30pm
(Closed on provincial government holidays)**The deadline for submissions is one month prior to the publication:****December 1st for No. 1 (January) & June 1st for No. 2 (July)***The Museum Association of Newfoundland & Labrador (MANL) is a nonprofit, charitable organization that seeks to promote the interests of community-based museums, groups, individuals and government organizations involved in the preservation and presentation of the province's cultural and natural heritage.**MANL gratefully acknowledges the financial support of the Government of Newfoundland and Labrador.***Registered Charity Number. 10775 6199 RR0001**

President's Report

As our summer begins to wind down, visitors return home and children go back to the classroom. Those of us who have been looking after museums, historic sites, cultural attractions and the like are wondering where has the summer gone? As we get ready for the fall, we should never forget that the work we do has great value. Jake Barton tells us, "A lot of our insights are based on the way in which people spend time at museums. They're curious, open, interested and engaging. They want to express themselves and see their own identity refracted through the museums."

It is no secret to our membership that museums protect, preserve, promote and present our tangible and intangible heritage and culture. They tell our stories in ways that help the visitor understand the legacy of our forefathers and foremothers who were strong, courageous and determined people. These stories are remembered through the amazing ability of the staff in our museums, throughout the province, who bring smiles and laughter to the listener, as well as tears. They hold memories for our children today and generations to come. Museums matter whether big or small.

We celebrated our integral place in society on "Museums' Day" which was held July 20th. We were delighted to sign the Proclamation with M.H.A. Sarah Stoodley, Parliamentary Secretary for the Honourable Christopher Mitchelmore, Minister of Tourism, Culture, Industry & Innovation. I was joined by our past chair, John Griffin, vice chair Linda Hickey and board members from the Bell Island Heritage Society at the No. 2 Mine Tour & Museum on historic Bell Island for this momentous occasion. Also in attendance was M.H.A. David Brazil, member for Conception Bay East Bell Island. It was certainly a red letter day to have M.H.A. Stoodley and M.H.A. Brazil collaborate on behalf of the museums in the province.

On October 25 & 26 2019, the Museum Association of NL will be holding its annual conference and general meeting. The theme "Heritage Tourism" will most certainly resonate with our members. We know, only too well, that museums are an economic engine in communities because they generate, much needed, new dollars through tourism. I look forward to chatting with you during the conference as we work together to further the positive impact our sites are having on cities, towns, islands, inlets and coves throughout this entire beautiful province.

Wishing all continued success with the remainder of your season.

Respectfully,

Teresita E. McCarthy (Teddy)
MANL President

Executive Director's Report

With the summer nearing an end many of our members have said goodbye to our seasonal staff and prepare for the shoulder tourism season. Museums begin the process of winterizing our facilities and begin our fall work. For MANL it is time for our 39th annual conference. The conference and annual general meeting provide an excellent opportunity to meet with other museum members, MANL's staff, board and the many presenters attending the conference. This year's topic is *Heritage Tourism: Experience Museums*.

Heritage Tourism has been described as, "travelling to experience the places and activities that authentically represent the stories and people of the past," and cultural heritage tourism is defined as "travelling to experience the places and activities that authentically represent the stories and people of the past and present." About 10 years ago I attended an ICOM Canada conference on the topic and watched heritage tourism grow in our province. Yet some question remain. Have we reached our full potential? Is there room for growth? And how can we work together to grow our industry? The conference committee hopes that our conference will discuss this topic and ways we can encourage growth within our sector. Our keynote speaker will be Craig Foley with Hospitality Newfoundland and Labrador. Mr. Foley is the CEO of Hospitality Newfoundland and Labrador and will be speaking on "The Future of Tourism".

Outside of the conference we continue focus on core deliverables including training. MANL's commitment to training continues with professional development courses being offered throughout the year. We offered two courses in the central Newfoundland and one in the St. John's region. We plan to offer two workshops at the conference: *Risk Management* and *Introduction to Impact Measurement for Community-based Heritage Organizations*. Both of these courses will help build your knowledge and insight into your organization. Registration is limited for both of these courses. Please register early to ensure you get your preferred choice. Registration forms are included in the newsletter package sent in the mail, online or through the office. Two more courses will be offered in the coming months.

Finally, MANL continues to advocate on our members behalf. We attended the Provincial and Territorial Museum Associations (PTMA) meetings held by the Canadian Museum Association (CMA). The PTMAs have provided many opportunities for our voice to be heard on the national stage. I look forward to seeing you at the conference in October.

Regards,
Ken Flynn



STAY UP TO DATE!

Like us on Facebook, follow us on Twitter, or visit our website: www.manl.nf.ca.

Are you receiving our weekly Listserv?
Contact MANL to be added and stay up to date! Promote your museum and heritage society news and announcements!

Sign up to receive our Listserv!

Email manl@nf.aibn.com
or call 709-722-9034 to stay up to date on museum announcements!

PROFESSIONAL DEVELOPMENT

Certificate in Museum Studies Program

Focus Areas of the Program:

- **Museum Governance & Management**
- **Collections Management**
- **Preventive Conservation**
- **Exhibit Planning and Development**

This program is designed to provides museum workers with a general introduction into current theories, standards, and best practices for museums. For more information, please visit MANL's website.

AROUND THE PROVINCE

Avalon Region

Bay Roberts Heritage Society Celebrating 30 Years



The Bay Roberts Heritage Society was founded in 1989 and incorporated in 1991 in an effort to stem the erosion and destruction of the last remnants of the history and culture of the town. Artifacts were being discarded or sold to outside interests, and older buildings were allowed to deteriorate and were torn down. The founding members were Betty Jerrett (chair,) Rexine Bradbury (treasurer), Phyllis Russell (secretary) and directors Jean Hillyard and Eric Jerrett. Dr. Wilson Russell was later added as a director and Christopher Pratt as honorary chair.

In 2002, the Society received the Manning Award of Excellence from the Historic Sites Association of Newfoundland and Labrador for the restoration and presentation of the Shoreline Heritage Walk. The Society was successful in obtaining ownership of the former Western Union Cable Building, established in 1913. The purpose was to save a historic building, provide space for a museum, gallery and archives and a home for the town council. After restoration, the building received a plaque recognizing its status as a Provincial Heritage Structure. Later, the Society received the Southcott Award and the Manning Award. The cable building is now a municipal Heritage Structure and National Historic Site.

In 2001, the Society received the "Award of Merit" from the Museum Association of Newfoundland and Labrador. The Society set up a "Friends of the Museum" organization. Their contribution is essential to the ongoing operation of the museum and gallery.

Bay Roberts Heritage Society

Labrador Region

Them Days NL Historical Society Heritage Award



On February 22—Heritage Day—I was so honored to be invited to Government House for an awards ceremony, during which the Newfoundland and Labrador Historical Society presented Them Days with their prestigious Heritage Award, in recognition of all that Them Days has done over the past 44 years.

The award was presented by the Patron of the NL Historical Society, Lieutenant-Governor Judy Foote, and Dr. Vicki Hallett wrote an introduction to four decades of work at Them Days—the quarterly magazine and the archival work and the exhibitions. It is simply amazing how much work has been accomplished over the years, so much of it by volunteers. Particularly in the early years, when volunteers were integral to the organization simply staying operational. It is so impressive!

The day was absolutely perfect—a private tour of Government House for those of us in attendance who hadn't been there before. I was able to invite several Them Days supporters to be there, some of whom I'd only talked to over the phone. It was wonderful to see support for Labrador's heritage alive and well in St. John's. Thank you to the NL Historical Society for their recognition of Them Days. It truly does mean a lot!

Aimee Chaulk, Them Days

For more on the NL Historical Society Awards, please see page 10.

Central Region New Home For Corduroy Brook Nature Centre

On June 21, 2019 the Corduroy Brook Nature Centre opened the doors to its new home with a ribbon cutting ceremony, followed by a grand opening celebration on June 28 with food and fun for all. Located at 2 Conservation Place, right next to the main trail head, the new center houses information panels, interactive displays, and even a beautiful back deck and more. Summer staff are available to give a tour and if you're a regular walker of the Corduroy Brook Trails, why not pop-in and say hello. Admission to the Centre is free! Be sure to drop in to the Third Place Café, located on the premises for a delicious treat. The Centre is open daily. For more information please visit their website: <http://www.corduroybrook.org/>



Western Region

I Love Newfoundland & Labrador



This partnership project between the Southwest Coast Historical Society and the Town of Channel-Port aux Basques started with discussions a year ago and with help from the Town workers, we are thrilled it is

in place. More elements will be added over the next couple of months. It is intentionally located at the entrance of the Railway Heritage Museum and the entrance of the town to hopefully give tourists some extra enticement to enter the museum area and to create a photo opportunity and a great memory moment. We are hoping to include a few other projects to the Museum grounds in the near future but great projects take time. Visit the Railway Heritage Museum & Train cars for a great interpretative tour.

Nadine Osmond, Southwest Coast Historical Society

Eastern Region

Sir William F Coaker Heritage Foundation

On June 22, 2019 the Union House Arts (UHA), a new community art space operated through the Sir William F Coaker Heritage Foundation held its grand opening. UHA is committed to supporting work being produced by artists and craftspeople in Newfoundland and Labrador through place-specific dialogues and collaborative programming in Port Union.

Union House Arts strives to be an art space that works to build awareness, understanding, and allyship with Indigenous peoples and settlers across the province and Turtle Island (the land mass also known as North America).

The aim of the UHA is to offer a thoughtful space for community residents and artists to work and share together; to expand ideas about what art can be, how and where it can be shown, and to create an environment that is accessible to people of all experiences and educations. The space will be experimental in nature with a focus on place-based programming and knowledge building and sharing. We are grateful for funding towards the restoration of our building from The National Trust for Canada for awarding the Union House Arts project with the regional prize in its 2017 "This Place Matters" competition.

For more information on the UHA, please visit: <https://unionhousearts.ca/about/> and be sure to check out Heather Nolan's article in the Newfoundland Quarterly: <http://nqonline.ca/article/union-house-arts-opens-in-bonavista/>

St. John's Region

Royal Newfoundland Regiment Drum: History Mystery

An antique drum that appeared on the doorstep of the Royal Newfoundland Regiment's museum last year has sparked a search into its past that spans decades and provinces, raising more questions than answers in the process. The instrument was welcomed with open arms upon its arrival, particularly because of its relatively newer vintage than most of the museum's objects, which date to the either the First or Second World Wars.

"We don't have a whole lot of items from the post '49 Royal Newfoundland Regiment, so to have something as special as a bass drum coming in to the museum, it got us pretty excited," said Frank Gogos, the museum's chair. The big drum, meant to strap onto a musician's chest for a marching band, was in great shape, with red lettering, a caribou appliqué and numerous stains, or what Gogos called, "a really nice patina." "We know this drum is fairly old, and it's been played well, and a lot," he said. But beyond those simple facts, it's proved difficult for Gogos and his colleagues to pin down much more about the drum.

Even its former owner is at a loss for much of an explanation about the drum's origins. A self-described history buff originally from St. John's, Tim Shea was gifted the drum by his wife almost 20 years ago, while the pair were living in London, ON. "She came across it in a little antique shop just outside of town. And me, being a Newfoundlander as well as a history buff, she said 'that's your gift,'" he recalled. "I've been dragging it around ever since." The drum survived moves to St. Catherine's and Peterborough, always occupying prime display space in their homes. But when the couple retired and moved back to St. John's, it became the victim of downsizing and was passed on to a friend, who in turn gave it to the museum. While that accounts for the drum's recent adventures, what happened prior to its appearance at that Ontario antique store is a mystery to Shea. "The dealer that we bought it from back in 2000 had no prior knowledge of it at all. He wasn't even sure where he got it," said Shea.

Back at the museum, with little to go on, Gogos and his colleagues managed to assemble a few clues about the drum's past, traced through archival video. "It first appears in our collection in 1964 during a summer camp being held in Makinson's, and there's a very clear shot that year of the drum being played and used during parades," he said. Markings inside the instrument reveal more hints: Gogos discovered handwriting, visible through a tear on the drum's skin, confirming the drum was, in the 1950s, owned by the 166th Regiment Band. But concrete answers as to where the drum originally came from, and how it ended up in Ontario, remain elusive. Despite those lingering questions, Gogos and the museum do know one sure thing: they're happy to own it, and have it proudly on display.

Reprinted with permission from CBC Newfoundland and Labrador: <https://www.cbc.ca/news/canada/newfoundland-labrador/royal-newfoundland-regiment-drum-1.5021496>

Museum Association of Newfoundland & Labrador 39th Annual General Meeting & Conference

HERITAGE TOURISM Experience Museums October 25-26, 2019

Holiday Inn & Suites

2019 KEYNOTE SPEAKER

Craig Foley, Chief Executive Officer
Hospitality Newfoundland & Labrador

“The Future of Tourism”

Apply Now: CMA Bursaries for Fall Conferences

Application deadlines for the Conference Professional Development Bursary are approaching for Fall Conferences in 2019. Apply and you could receive up to \$600 (\$800 if attending from a remote area) towards your next conference attendance. Applications for the Conference Professional Development Bursary are due 8 weeks prior to the conference. CMA Bursaries can be applied to registration fees, accommodation and travel expenses. The bursary also offers a per diem.

The Extended Bursary Application Deadline for the MANL AGM & Conference: October 4, 2019

You may apply for this bursary if you meet the following criteria:

- Full-time employee of a public, non-profit museum, related institution/organization for at least 1 year; or
- Part-time employee of public, non-profit museum, related institution/organization for at least 2 years; or
- Volunteers who have been active for 2+ years; or
- Full-time student enrolled in a Museum Studies or other related program for at least 2 years;
- AND have not received the bursary in the past 24 months.

PLEASE NOTE: The CMA is entitled to grant up to five bursaries per event and can only support one person per institution per event. For more information regarding eligibility and to apply, please visit <https://museums.ca/site/bursaries>. Please note that CMA Membership is not required to apply for a bursary. Any questions? Please contact bursaries@museums.ca.

Generously supported by:



Canadian
Heritage

Patrimoine
canadien



MANL AGM & Conference

Professional Development

October 25, 2019

Session #1

Introduction to Impact Measurement for Community-based Heritage Organizations

Presented by: Jane Severs, AHI

Location: MANL, 200 Military Road

Price: \$85 (MANL members) and \$110.00 (non-members)

Do you need to demonstrate the impact of your organization's work? Of course you do! Solid impact data can justify current investment in your heritage organization and motivate future support (and who doesn't need that!). It can show funders, donors, volunteers, board members and staff how, and how well, your organization is contributing to your community, region, and maybe even beyond. It can help you identify your organization's strengths and weaknesses. It can help you make informed decisions about the work you do.

Join MANL for a one day intro to impact measurement for community-based heritage organizations. We'll introduce you to the lingo, provide some handy tools and resources, enjoy some tasty snacks, and give you the knowledge and confidence you need to start measuring the difference your organization makes. Zero previous experience required.

Session #2

Risk Management

Presented by: TBA

Location: Holiday Inn & Suites St. John's Airport

This session focuses on developing an understanding of how to assess and manage risk within existing/planned activities and programs, defining risk management, and providing an overview of the steps to take to develop a risk management plan.

In focusing on assessing risks, the module outlines the importance of context, strategies such as risk avoidance and sharing, the role of insurance, and the value of the Composite Risk Index. There is also a walkthrough of integrating the Risk Matrix as another useful tool in a risk management strategy. (Please note: This program is available pending funding)

The pre-conference workshops are offered on October 25, 9 a.m. – 4:30 p.m. Only those who attend a pre-conference workshop can apply for Canadian Museums Association travel bursary (www.museums.ca). Space is limited in each workshop; pre-registration is required. Please note: there are two locations for Friday's workshops.

MEMBERS ONLY Login: Useful resources, tools, templates & much more!

Have you logged in to the Members Only section of MANL's website yet? There are lots of useful **tool kits** on exhibits, collection management, conservation, human resources and much more!

If you are a member and would like to access this information, please contact us by phone (709) 722-9034 or by email.

Please note that the login information can only be created in the MANL Office. Once you have been provided with your username and password it can be shared with fellow members of your museum (staff, volunteers and board members) to access online content.

River Table: New Exhibit at The Fluvarium



Kids are busy as beavers while playing with the newest exhibit at The Fluvarium. The Busy Beaver Lodge features a river table that allows children and adults to use interlocking bricks to build islands, bridges dams and lodges in a flowing stream. They can race rubber ducks or try to build a boat that will navigate the turbulent waters. New exhibits breathe new life into any museum, and this one is a show stopper. Through project support from the Rotary Club of St. John's, the exhibit is almost complete and is open to the public!

Denise Hennebury, Environmental Educator at The Fluvarium says, "You will probably get wet, so be prepared to push up your sleeves! However the exhibit has already been a huge

success. Visitors quickly get caught up in the fun and are playing and learning at the table for over an hour at a time. Experiential learning is captivating that way. The best part is that of course smaller kids love it, but no less than the university students who discover the fun to be had and the adults who play when they think no one is looking." Along with the river table the new exhibit also includes facts about beavers, pictures of local beavers and the whimsical "Busy" who is the mascot for the space. The new Fluvarium exhibit will soon have other hands-on activities including a touch table.

Education Manager, Bob Piercey, shares that "As environmental educators we understand the importance of seeing and touching real life examples. Such interactions truly elevate the experience of students and visitors. Our key message at The Fluvarium is understanding our place in nature with respect to the rivers, watersheds and the animals that live here, especially in the urban centre. The Fluvarium windows let us look into the living stream giving a unique insight into river life. Our new river table gives us an exciting way to show visitors how water moves and reacts to a changing landscape. We hope it will not only will it provide a lot of fun, but in context of our museum as a whole it will provide some interesting fodder as we all learn to play more gently on the earth."

Earlier this spring The Fluvarium did a donation campaign to acquire previously loved bricks for this project. With Rotary's help and help from the community the river table is open for use! If you want to check it, the table is available with admission during regular museum hours when there are no other programs being delivered. The Fluvarium staff says that currently the best time to come play is between 3:00 p.m. and 4:00 p.m. The table is turned off for the night at 4:00 p.m. for feeding time and to allow the table to be reset for the next day, and let's you enjoy feeding time! For more information please contact us 754-3474 or visit <http://fluvarium.ca>.

Canadian Conservation Institute: Scientific Services



The Canadian Conservation Institute (CCI), a Special Operating Agency within the Department of Canadian Heritage, advances and promotes the conservation of Canada's heritage collections through its expertise in conservation science, treatment and preventive conservation. CCI works with heritage institutions and professionals to ensure these heritage collections are preserved and accessible to Canadians now and in the future.

Did you know that the Canadian Conservation Institute (CCI) provides scientific services free of charge to Canadian institutions caring for public collections? Whether you want to understand the degradation process affecting an object or determine the composition of original materials, ancient or modern, their conservation scientists can help. CCI scientists also provide onsite services for a fixed fee.

CCI aims to serve a broad array of institutions across the country. However, since they are the only place in Canada that offers such specialized services, demand is high. Turnaround time depends on the complexity of the project, the number of samples or objects and the workload of the scientists at the time of the request. Please provide sufficient time for them to answer your questions in a timely manner. More information on CCI's scientific services is available on their website: <https://www.canada.ca/en/conservation-institute.html>

Mary March Provincial Museum Exhibition Revamp: A Lot More Regional History to Appreciate

Refreshing a dated exhibit is always an interesting task for a museum. As part of regular Rooms operations since the fall of 2017, new exhibit components are being developed for the Mary March Provincial Museum (MMPM) in Grand Falls-Windsor, one of The Rooms Regional Museums. These renovated exhibit components are significantly upgrading the quality of select displays and their interpretation. The gallery upgrades are enhancing the main purpose of the MMPM: to act as an introduction to the cultural history and natural history of central Newfoundland.

The MMPM permanent gallery is divided into three sections: the cultural history of the Indigenous peoples and peoples of European descent, and the natural history of the region. New artifacts, graphics, and exhibit furniture in each section highlight collections from the area, and their presentation and interpretation. For example upgrades to the Indigenous peoples exhibit components, some done in close consultation with Dr. John Jeddore of the Miawpukek First Nation in Conne River, have made these components more contemporary and relevant to Indigenous people.

The European settler exhibit component on the woods industries of central Newfoundland now better highlights lumbering, logging and paper mill operations, along with expanded detail on the growth and history of the company towns - in essence the industrialization of the region.

Refreshing the exhibit components has also included a total revamp of the diorama known as "The Parlour." Here a pleasing mix of new furniture and domestic artifacts, plus art work, recreates a parlour characteristic of many in central Newfoundland in the early 1900s. Flipbooks external to the new exhibit components describe in succinct detail important elements of all the objects displayed.

In future seasons there are plans to upgrade sections relating to the fisheries-based coastal settlement and railway and mining history. The inclusion of more contemporary stories is planned. One area of the gallery's natural history section relating to central Newfoundland's geology will also be redeveloped.

Refreshing the dated MMPM exhibit components has given us the opportunity to make the complex and interesting history of the region more relevant to residents and visitors. Curatorial work there is ongoing, so watch for the 2020 opening of more revamped exhibition sections!

Kevin McAleese, Curator of History, The Rooms Provincial Museum Division

Editors Note: The cover photograph for this issue of MANL's newsletter was kindly provided courtesy of the Rooms.

Cover Photo Caption: The refreshed and revamped parlour diorama at the Mary March Provincial Museum.

Canadian Heritage Approves Supplemental Funding for YCW-BCH 2019-20



The Canadian Museums Association (CMA) is pleased to announce that the Department of Canadian Heritage has approved supplemental funding of \$1,530,000 to support the creation of new internships through the Young Canada Works — Building Careers in Heritage program for 2019-20. This supplement will increase the number of fundable positions more than tenfold, from 13 to 167. We encourage all museums interested in developing young museum professionals to apply this winter.

Part of the Government of Canada's Youth Employment Strategy, the CMA collaborates with Canadian Heritage in delivering the Young Canada Works program, which offers summer jobs and internships in museums and related organizations. This funding supplement is an important investment in the future of the museum industry, creating development opportunities for future colleagues. The CMA and its members would like to express their gratitude to Canadian Heritage for increasing their support of this collaboration. For more information, please visit: <https://www.museums.ca/>

This project has been made possible by the Government of Canada. Ce projet a été rendu possible grâce au gouvernement du Canada.

Canada

CONGRATULATIONS TO OUR MANL MEMBERS

Manuels River's Education Manager, Gillian Davidge Honoured by the Canadian Association of Science Centres

It was a pleasant surprise for Education Manager, Gillian Davidge, when her name was called as winner of the Outstanding Project or Program Leadership Award at Canadian Association of Science Centres' National Conference in Halifax in May. Little did Gillian know, her team at Manuels River Hibernia Interpretation Centre had nominated her for the award weeks earlier.

Gillian has been Education Manager with Manuels River for the past 2 years. Not only has she impressed us with her passion and hard work, she has reorganized and refreshed the education programs offered at Manuels River. When nominations were requested for the award, her co-workers knew she was the perfect fit, as the award itself highlights leadership qualities and recognizes the efforts of team leaders in science centres, who often sit at the forefront of seeing certain programs and initiative come to fruition.

Small science centres like Manuels River are often overlooked at large national conferences, so it was an amazing accomplishment and win for the province when Gillian accepted the award. Congrats to Gillian and the entire team at Manuels River.

Caitlin Green, Manuels River



Newfoundland & Labrador Historical Society Heritage Awards

THEM
DAYS

At a ceremony held in Government House in St. John's on Heritage Day, February 22, 2019 The Honourable Judy

Foote, Lieutenant Governor of Newfoundland and Labrador, presented Them Days with the NL Historical Society's prestigious Heritage Award. On hand to receive the award (L-R): Nigel Markham (founding volunteers), Dr. Hans Rollmann (frequent contributor), Sam Saunders (volunteer/contributor), Dr. Robin McGrath (former Board Secretary), Aimee Chaulk, (Editor), Lieutenant Governor Judy Foote, Terry Bishop Stirling (NLHS), Myra Bird King (supporter).



The Newfoundland Historical Society Heritage Fellowship Award was instituted in 1976, to acknowledge a person or persons who has contributed significantly to the preservation and/or dissemination of the written record of the history of Newfoundland and Labrador.

Nominations may be made by any member of the Society. The winner is chosen by the Executive and Council from the nominees. It is hoped in this way to sometimes honour contributions to the written history of Newfoundland by persons who otherwise might be ignored. For more information on the NL Historical Society: <http://www.nlhistory.ca/>

Times! Times! Times!

New On-line Exhibit at Placentia West Heritage Committee

"They're havin' a time" was an expression that stirred excitement and expectation among the people of Placentia West in Newfoundland. The custom of "havin' a time" was often connected to special dates or milestone events, although its key purpose was bringing everyone together to celebrate the life they shared as a community. And when the time was over, it would become a community memory told and retold, for "what a time it was".

In the spirit of continuing the retelling of these stories, the Placentia West Heritage Committee has prepared an online exhibit - "Times! Times! Times!" with the support of the Virtual Museum of Canada Community Stories Investment Program. We thank the VMC for its financial support and for the advice and technical support provided as we worked on this exhibit.

Our exhibit is now complete and we encourage you to visit the Community Stories section of VMA's website: http://www.virtualmuseum.ca/community-stories_histoires-de-chez-nous/times-times-times_le-temps-le-temps-le-temps/

Placentia West Heritage Committee



Call for Proposals for Virtual Exhibits: The Virtual Museum of Canada

Got an online product in mind? Now is the time to submit your project to the Virtual Museum of Canada! The Virtual Museum of Canada is pleased to open its new Call for Proposals as part of its Virtual Exhibits investment stream. The Virtual Exhibits investment program helps Canadian museums and heritage organizations develop virtual exhibits and resources that engage online audiences in Canada's history, heritage, and culture.

Proposals can be submitted for the creation of the following types of products:

Virtual Exhibit: Uses technology to reach and engage visitors with interpreted content organized around a subject and a storyline.

Virtual Tour: Uses technology to provide access to and interpretation of a physical space (such as an historic site, a geographical location, or an exhibit) or of an imagined space.

Interactive Resource: Uses technology to engage visitors in active play, like a game, hunt, or quiz.

Educational Resource: Uses technology to engage visitors in learning about a subject directly or indirectly related to a curriculum area.

Note: Each product must provide a complete online experience, independent of a specific context or physical space. If you're a museum or heritage organization looking to create an online product, this program is for you. Better still, there are two convenient levels of investment: medium and large.

The deadline to submit your proposal is October 23. Please visit the Virtual Museum of Canada website for details: <http://www.virtualmuseum.ca/home/>

Museum Day NL 2019



On Saturday, July 20, 2019, MHA Sarah Stoodley, Parliamentary Secretary to the Honourable Christopher Mitchelmore, Minister of Tourism, Culture, Industry and Innovation (TCII) was invited to #2 Mine Tour & Museum on historic Bell Island for the signing of the Proclamation for Museums' Day, in Newfoundland and Labrador. On hand for the Museum Day Proclamation signing: Front row (l-r), BIHS Founding Co-Chair & Board Member Kay Coxworthy, Conception Bay East-Bell Island MHA David Brazil, MANL President Teresita McCarthy, Ms. Stoodley, MANL Vice-President Linda Hickey, MANL Past-President John Griffin. Back Row (l-r), BIHS Board Members Tom Spracklin, Desmond McCarthy, Rosalind Hurley and Ernest Goodyear.

In celebration of Museum Day MANL encourages all Newfoundlanders and Labradoreans to visit and discover over 150 museums, galleries, and historic sites across our province. The signing of this proclamation highlights the important role of museums as institutions that serve society and its development. Museum events provide an opportunity to celebrate all kinds of museums, galleries, and heritage sites in Newfoundland and Labrador. Museums are continually launching new exhibits and programs, and many seasonal attractions are opening their doors to welcome summer tourists.

Canadian Heritage Information Network Digital Preservation Recommendations for Small Museums



Smaller cultural heritage institutions increasingly hold digital content such as images, audio files, videos, and similar media. Existing digital preservation practices are designed with larger memory institutions in mind, and these can be daunting for smaller organizations or for those that do not have a specific focus on digital archival materials. As a result, museums (smaller museums, in particular) often do little more than perform backups of their digital media. The Canadian Heritage Information Network's Digital preservation recommendations for small museums offers tips to improve your museum's digital preservation practices, while acknowledging the realities of constrained budgets and resources. This resource is also available in French [here](#).

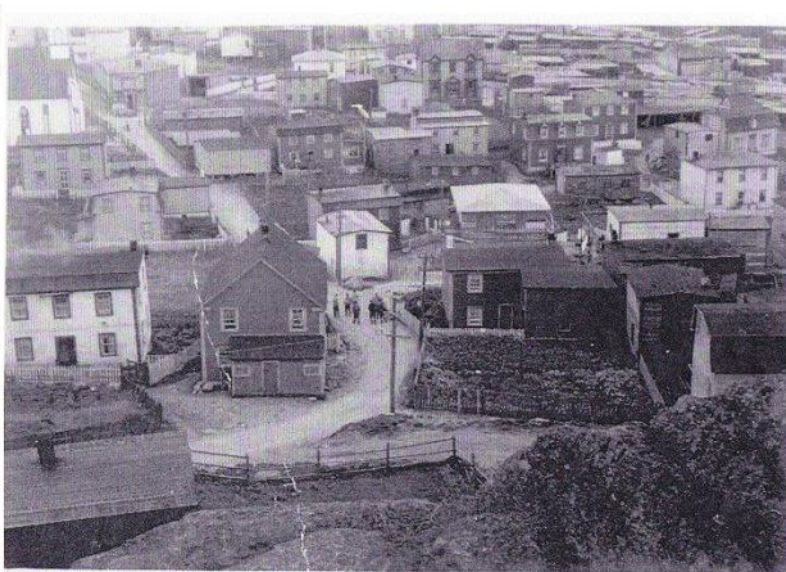
This Digital Preservation Toolkit provides accessible template, frameworks, decision trees and documents that are designed to help museums assess their digital preservation needs, to produce policy and procedures around digital preservation, and to develop, select and implement an action plan. Resources are presented in chronological order of need for the development of a digital preservation strategy.

For more information, please visit CHIN's website: <https://www.canada.ca/en/heritage-information-network/services/digital-preservation/toolkit.html>

Heritage Bay de Verde: Going Back To Its Roots!!

The Bay de Verde Recreation Committee has just recently announced that they will be starting their very own "Community Garden." The project is to locally grow produce and distribute it to local residents to promote healthy living and eating. Now, how cool is that!!

Bay de Verde is no stranger to growing vegetables. In the 1901 census, there were 1,009 barrels of potatoes grown along with 179 barrels of turnips and thousands of heads of cabbage. Bay de Verde residents also raised cattle, sheep, and swine, made their own butter and produced their own wool.



In the 1921 census, there were 514 barrels of potatoes and 64 barrels of turnips grown, and again thousands of heads of cabbage. In the old photo (right), you can see many of the smaller gardens where residents of Bay de Verde used to grow their vegetables years ago. 1921 census continued...6,032 gallons of milk produced and 1,401 dozen eggs...Wow!! The 1935 census shows (among other things) 20 bushels of potatoes raised, 1,000 pounds of cabbage raised, 180 gallons of milk produced, as well as a 100 dozen eggs.

Bay de Verde is one of the oldest settlements in North America and steeped in history. The rock walls (left) were built to indicate the boundaries of people's vegetable gardens years ago. Almost

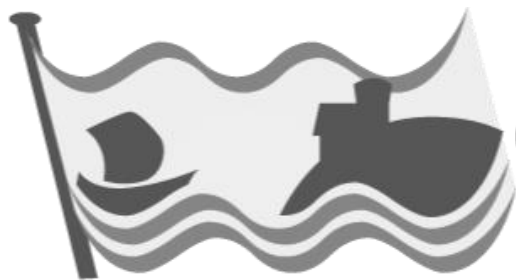
everyone in Bay de Verde had vegetable gardens years ago. It was the only way for families to survive.

There are still a few people from The Harbour who have continued the tradition of growing their own vegetables. The very first Bay de Verde Community Garden will be coming soon. We can't wait to see it take shape and watch things grow. "If you never experienced the joy of accomplishing more than you can imagine, plant a garden."

Richard Walsh, Vintage Bay de Verde @VintageBaydeVerde

WHAT'S HAPPENING AT YOUR MUSEUM?

Contact MANL with the details of your upcoming events!
Call (709) 722-9034 or E-mail: manl@nf.aibn.com



Historic Sites Association of Newfoundland & Labrador

2020 Manning Awards Nominations

Nominations are open for the *2020 Manning Awards for Excellence in the Public Presentation of Historic Places*. If you know an individual, a community or organization that strives in preserving and presenting this province's history and heritage, nominate them today.

The Manning Awards for Excellence in the Public Presentation of Historic Places was created in 1993 to recognize and celebrate the work of individuals, communities, and organizations in preserving and presenting this province's history and heritage. The award is named for the late Bill Manning, a former Parks Canada Superintendent of Newfoundland and Labrador's National Historic Sites. During his career Manning strengthened and expanded the sites in the province with a vision of greater community involvement.

The Manning Awards are held bi-annually in the spring and are honored with the patronage of the Lieutenant Governor of Newfoundland and Labrador. The awards are divided across various categories, depending upon the scale and reach of their projects: Community, Provincial, National, and International. A fifth category was introduced in 2014, Outstanding Heritage Support, to recognize individuals who have made great personal contributions to the presentation of Newfoundland and Labrador's heritage. The nomination deadlines: January 6th, 2020. Please visit historicsites.ca/manning-awards to learn more.

Advertise with MANL

The MANL newsletter is published biannually and distributed to member museums, heritage groups, interested individuals, government representatives, and sister organizations within the province and beyond.



Museum Association of Newfoundland and Labrador



NEWSLETTER Advertising Rates 2019—2020

Ad Dimensions:

Full Page Size: 7 1/8" w X 9 1/2" h

Half Page Size: 7 1/16" w X 4 3/4" h

Quarter Page Size: 3 1/2" w X 4 3/4" h

Business Card Size: 3 1/4" w X 2 1/2" h

Rates Per Issue:

MANL MEMEBERS

Full Page:	\$120
Half Page:	\$70
Quarter Page:	\$40
Business Card:	\$20

NON-MEMBERS

Full Page:	\$130
Half Page:	\$85
Quarter Page:	\$45
Business Card:	\$30

Please Contact:

MANL

PO Box 5785

St. John's, NL A1C 5X3

Telephone: 709-722-9034

Email: manl@nf.aibn.com

MANL Membership Notes

Focus Areas of the Program:

- **Museum Governance & Management**
- **Collections Management**
- **Preventive Conservation**
- **Exhibit Planning and Development**

This program is designed to provide museum workers with a general introduction into current theories, standards, and best practices for museums. For more information, please visit MANL's website.

Museum Association of Newfoundland & Labrador Certificate in Museum Studies Program



THE MANY BENEFITS OF MEMBERSHIP

CMA Bursary Program:

The Canadian Museums Association offers three types of bursaries to assist museum professionals in the following areas:

1. Conference Professional Development
2. Emerging Professional Development
3. Mid-Career Professional Development

MANL members can avail of these programs. For more information on the program contact the CMA (www.museums.ca).

MANL Disaster Loan Fund:

MANL offers an emergency loan of up to \$10,000 to member museums experiencing a disaster with their collections. This repayable loan is designed to provide immediate financial assistance to MANL members. The MANL disaster loan can be used by museums affected by disasters of any magnitude however, MANL reserves the right to assess each individual case for eligibility. This loan is intended to provide immediate funds that would be repaid to MANL by the museum.

MANL Membership Discounts:

In addition to receiving discounts on training programs and workshops, MANL members also receive free admission to over 70 museums in Newfoundland and Labrador.

Environmental Monitoring Equipment Loan Program

This monitoring equipment can be useful in helping to determine regulatory environmental levels, as well as give the museum more knowledge into the effects the surrounding environment has on artefact collections.

THESE DEVICES RECORD:

- **RELATIVE HUMIDITY**
- **TEMPERATURE**
- **LIGHT INTENSITY**

MANL can also provide consultation with museums on how to regulate environmental controls.



MANL members can borrow specialized equipment such as light meters, temperature and relative humidity meters, and data loggers for a fixed period in order to monitor their museum environment.

MANL Membership Form (April 1st 2019—March 31st 2020)



Is this a New Membership? ☐

Is this a Membership Renewal? ☐

Please ensure that we have your **YEAR-ROUND** contact information.

Please provide the following information:

Individual Name/Institutional Name: _____

Name of Museum/Heritage Attraction: _____

Governing Authority: _____

Mailing Address: _____

City/Town _____ Province: _____ Postal Code: _____

Physical Address: _____

City/Town _____ Province: _____ Postal Code: _____

Telephone: _____ Cell: _____ Fax: _____

E-mail: _____

*Your e-mail is being collected and used **STRICTLY** for MANL communication with its members.*

MANL is adhering to Canada's anti-spam legislation. Please provide consent if you wish to receive our emails:
_____ Yes, I provide consent to receive emails from MANL.

I would prefer to receive my **MANL NEWSLETTER:**
(Members can receive both formats)

In Print by Mail ☐

In PDF by Email ☐

All members will continue to receive newsletters in print unless requested otherwise.

DOUBLE DOWN!

Make a Donation to MANL!

As a registered charitable organization, match your membership fee as a donation!

____ I would like to make a donation (Tax Receipt Available)

_____ \$25.00 _____ \$60.00

\$ _____ (other amount)

(Registered Charitable #10775 6199 RR0001)

Type of Annual Membership:

_____ \$25.00 Individual Membership (Voting)

_____ \$60.00 Institutional Membership (Voting)

Method of Payment:

_____ Cheque (*Payable To: Museum Association of Newfoundland and Labrador*)

_____ Cash

Total Payment Enclosed \$ _____

Forward your completed form with your payment to:

Museum Association of Newfoundland and Labrador

PO Box 5785 • St. John's, NL • A1C 5X3

E-mail: manl@nf.aibn.com • Fax 709-722-9035 • Web: www.manl.nf.ca