



NEWSLETTER

A Publication of the Museum Association of Newfoundland & Labrador
Winter 2024 - Volume 41, Number 2

The 118 Year-old Clock in Carbonear Finally Restored!



MANL Professional
Development

3-4

Around The
Province

5-6

Preserving Cape
Ray's Shipwreck

11

MANL BOARD OF DIRECTORS 2023-2024

EXECUTIVE OFFICERS:

President
Linda Hickey, Bell Island No. 2 Mine Tour & Museum

Vice President
Janet Rumsey, Individual Member

Secretary
Bonnie Ryan, Blackhead One Room School & Church Museum

Treasurer
Teresita McCarthy, Bell Island No. 2 Mine Tour & Museum

REGIONAL DIRECTORS:

St. John's: Manny Kaur, Bell Island No. 2 Mine Tour & Museum

Avalon: Keith Thomas, Carbonear Heritage Society

Eastern: Joan Kane, Trinity Historical Society

Central: Sheldon Kirby, Norris Arm Heritage Society

Western: Cynthia Randell, Grenfell Historic Properties

Labrador: Lena Onalik, Nunatsiavut Government

MANL STAFF

Executive Director
Ken Flynn (kflynn@nf.aibn.com)

Office Manager
Anne Madden (manl@nf.aibn.com)

Professional Development Coordinator
Lara Maynard (manfld.training@gmail.com)

Digital Project Coordinator
Kseniia Trubachova (manfld.office@gmail.com)

Cover Photo Credit: The Carbonear Heritage Society
Cover Photo: The Old Post Office Clock, Carbonear

Articles can be submitted to:

MUSEUM ASSOCIATION OF NEWFOUNDLAND & LABRADOR

P.O. Box 5785, St. John's, NL, A1C 5X3

PH: (709) 722-9034 • FX: (709) 722-9035 • E-mail: manl@nf.aibn.com
Web: <https://museumsnl.ca>

Office Hours: Monday to Friday, 8:30 am to 4:30 pm
(Closed on provincial government holidays)

The deadline for submissions is one month prior to the publication.

The Museum Association of Newfoundland & Labrador (MANL) is a nonprofit, charitable organization that seeks to promote the interests of community-based museums, groups, individuals and government organizations involved in the preservation and presentation of the province's cultural and natural heritage.

MANL gratefully acknowledges the financial support of the Government of Newfoundland and Labrador.

Registered Charity Number. 10775 6199 RR0001

MUSEUM DAY NL 2024

MUSEUM DAY NL

JULY 13, 2024



MANL

#museumdaynl2024 #museumsinnl

SAVE THE DATE: July 13, 2024

The Museum Association of Newfoundland and Labrador is encouraging all MANL members this year to celebrate Museum Day NL 2024.

Held annually on the second Saturday in July, Museum Day NL provides an opportunity to highlight and promote museums, galleries, and heritage sites throughout the Province of Newfoundland and Labrador.

Located in every region of the province, museums are an important part of Newfoundland and Labrador's cultural fabric. This annual event demonstrates that museums are integral to our provincial cultural and tourism infrastructure and contribute to lifelong learning, creating distinct and vibrant communities to live, work, visit, and invest.

Museum Day NL was created by MANL to promote our membership, who we support through training, communication, advocacy and standards of excellence.

Please let us know at MANL what you have planned for Museum Day NL 2024 so we can help promote your events and programs.

We invite everyone to use hashtag #MuseumDayNL2024 and #MuseumsInNL on all your social media posts.

STAY IN TOUCH WITH MANL!



MANL

(709) 722-9034
manl@nf.aibn.com
@MuseumsNL
@manltweets

#MuseumsInNL

Subscribe to our
Weekly Museum
Announcements!

President's Report

Embracing the Past, Envisioning the Future: A Recap and Outlook from the Museum Association of Newfoundland and Labrador

Dear Esteemed Members and Supporters of the Museum Association of Newfoundland and Labrador,

As we stand at the threshold of a new year, it is with great enthusiasm that I reflect on the exceptional strides and accomplishments we, as a community of museum enthusiasts, have collectively achieved throughout the past year. The Museum Association of Newfoundland and Labrador (MANL) has been at the forefront of championing our rich cultural heritage, and in tandem, we have made substantial progress in fortifying the profile and influence of museums across our cherished province.



Our dedicated board members have been instrumental in steering MANL towards fruitful collaborations and innovations within the museum community. We have actively embraced partnerships with like-minded organizations, aligning our efforts to leave an enduring impact on the preservation and celebration of Newfoundland and Labrador's diverse cultural tapestry.

In sync with our collaborative spirit, MANL has been wholeheartedly on board with the provincial Vision 2026, working towards its goals to enhance the cultural landscape of our province. These collaborations have not only elevated the quality of our exhibitions and programs but have also fostered a sense of unity and shared purpose within our community.

Training and professional development have been focal points for MANL in the past year, recognizing that investing in the skills and knowledge of our museum professionals is pivotal for the continued growth and excellence of our institutions. Through workshops, seminars, and training sessions, we have empowered our members to excel in their roles, ensuring that our museums remain beacons of education and inspiration.

As we set our sights on the future, the coming year holds the promise of even more exciting opportunities and initiatives. Building on the momentum of the past year, we are committed to expanding our collaborations, implementing new and innovative projects, and actively contributing to the realization of the provincial Vision 2026.

I encourage each of you to actively engage in our upcoming events, share your insights, and contribute to the collective efforts shaping our museum community. Together, we can continue to make a meaningful impact on the cultural fabric of Newfoundland and Labrador.

Thank you for your steadfast support and commitment to the Museum Association of Newfoundland and Labrador. I eagerly anticipate a year filled with collaboration, growth, and the continued celebration of our rich cultural heritage.

Warm regards,

Linda

Linda Hickey
President, Museum Association NL

MANL PROFESSIONAL DEVELOPMENT

MANL Spring Training Schedule

- Phase Box and Encapsulation Workshop - Carbonear, Friday, March 15, 2024
- Introduction to Museum Governance & Management - Grand Falls-Windsor, Saturday-Sunday, March 23-24, 2024
- Phase Box and Encapsulation Workshop - Grand Falls-Windsor, Monday, March 25, 2024
- Midday Museums: Let's Talk About CEDP Funding! - ZOOM, Tuesday, March 26, 2024 (FREE!)
- Introduction to Preventative Conservation - St. John's, Saturday-Sunday, April 27-28, 2024
- Midday Museums: TBA - ZOOM, Tuesday, April 30, 2024 (FREE!)

CERTIFICATE IN MUSEUM STUDIES PROGRAM

- Museum Governance & Management
- Preventive Conservation
- Collections Management
- Exhibit Planning and Development

For more information, please contact MANL's Professional Development Coordinator, Lara Maynard at manfld.training@gmail.com



BEFORE YOU REGISTER: IMPORTANT WORKSHOP INFORMATION

TRAVEL SUBSIDY:

Available for MANL members (individual or institutional), while funds last. Email manfld.training@gmail.com to inquire.

REGISTRATION:

Register and pay online on MANL's Eventbrite page. Discounted price for MANL members. Small Eventbrite fees will apply. MANL members who cannot use Eventbrite or would like to pay by cash or cheque should email manfld.training@gmail.com.

CANCELLATION POLICY: In the event of inclement weather, etc., the training will be rescheduled and refunds will be offered. Cancellations received from participants less than 5 days in advance are not eligible for refunds. Participants who do not attend remain responsible for full payment.

ACKNOWLEDGEMENTS: MANL is grateful for the support of the Cultural Economic Development Program, Department of Tourism, Culture, Arts and Recreation, Government of Newfoundland and Labrador. We would also like to thank our workshop hosts, the Carbonear Heritage Society and the Grand Falls-Windsor Heritage Society.

QUESTIONS? Please visit MANL's website for more details. Please forward any workshop or training-related questions to: manfld.training@gmail.com.

MANL PROFESSIONAL DEVELOPMENT

A Little Piece of MANL History

Lara Maynard, MANL's Professional Development Coordinator, recently got chatting at a local library with a man who seemed familiar. It turned out to be John Maunder, who was once Curator of Natural History at the Newfoundland Museum (now The Rooms) – and one of MANL's founders! John sent Lara this business card, from when Evelyn Riggs from Glovertown was MANL's first training coordinator. Our contact information has long changed.



Photo Credit: Lara Maynard

Other people who have filled the professional development/training coordinator role at MANL include Penny Holden, Catherine Rice, Danielle Rundquist, and Sarah Wade. And Lara remembers Donna Mercer, who was Project Coordinator for a time back when Ute Oshevsky was MANL's director.

Who else has been PD/training coordinator or other staff member at MANL since its incorporation in 1980? Let Lara know!: manlfd.training@gmail.com.

Professional Development at the Torbay History House & Museum

MANL was recently invited to the Torbay History House & Museum to participate in a Professional Development Day, during Heritage Week 2024. Noah Morritt, Torbay History House's manager, invited museums and heritage groups from the neighboring Killick Coast towns of Torbay, Pouch Cove, Portugal Cove-St. Philip's, and Logy Bay-Middle Cove-Outer Cove.

MANL's Anne Madden was the first presenter of the day, providing information on the topic of Supervising Summer Students.

Photo Right: Anne Madden, MANL's Office Manager leads a workshop on Supervising Summer Students at the Professional development day hosted by the Torbay History House and Museum. Photo Credit: Lara Maynard.

Midday Museums



MANL is pleased to announce *Midday Museums: Nourishing Knowledge for Heritage Professionals & Volunteers*, a series of free webinars, discussion sessions and networking events, set for noon on the last Tuesday of each month. We'll gather on Zoom and sometimes in person/hybrid, to talk about funding applications, collections management, supervising student staff and other topics. Everyone is welcome!

Our first session featured MANL's Digital Project Coordinator Kseniia Trubachova, discussing digital transformation trends in museums and sharing some results from MANL's Digital Needs Assessment Survey. Our members Sherry Lundrigan from the Crow's Nest and Neil Burgess from the Shipwreck Preservation Society joined the discussion, outlining digital projects from their organizations. The next session *Let's Talk About CEDP Funding!* is scheduled for March 26, 2024.

MANL is grateful for the support of the United Way Newfoundland and Labrador's Community Services Recovery Fund, as well as the Cultural Economic Development Program, Department of Tourism, Culture, Arts and Recreation, Government of Newfoundland and Labrador.



AROUND THE PROVINCE

Around The Province

Province Commemorates 75th Anniversary of Confederation



2024 marks the 75th year of our province's Confederation with Canada and celebrations are getting underway!

The Government of Newfoundland and Labrador recently announced two grant programs, the *Community Celebrations and Events Grant*, as well as the *Heritage and Indigenous Cultural Projects Grant*. Both programs are being administered by Celebrate NL.

The *Community Celebrations and Events Grant* will support Confederation 75 celebratory events occurring in municipalities, local service districts and Inuit Community Governments between April 1 and July 15, 2024. The *Heritage and Indigenous Cultural Projects Grant* was open for applications until March 1, 2024 to heritage organizations (museums, archives, historical societies, historic trusts) and Indigenous organizations with a cultural or heritage mandate. This fund was established to support exhibits, projects, programs or events thematically related to Newfoundland and Labrador's Confederation with Canada.

In special recognition of Year of the Arts and the 75th anniversary, the provincial government created a 75th Anniversary of Confederation Medal to recognize Newfoundlanders and Labradorians who have made significant contributions to their communities and the province over the past 75 years. Up to ten Premier's Medals for Arts and up to ten Premier's Medals for Heritage will be awarded in 2024.

For more information on Confederation 75, please visit:
<https://celebratenl.ca/confederation-75/>

Around The Province

New Inductees Added to the Provincial Historic Commemorations Program

On March 8, 2024, International Women's Day, Heritage NL announced 5 new recognitions under the Provincial Historic Commemorations Program.

Provincial
Historic
Commemorations
Program

Tradition Bearer

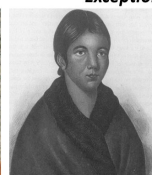


Tshaukuesh Elizabeth Penashue

Exceptional People



Demasduit



Shanawdithit



Mary Southcott



Elsie Holloway

The new inductees include:

Tradition Bearers

Tshaukuesh Elizabeth Penashue

Exceptional People

Demasduit

Shanawdithit

Mary Meager Southcott

Elsie Holloway

The Provincial Historic Commemorations Program is a citizen-driven program that commemorates aspects of Newfoundland and Labrador's history and culture that are of provincial significance. It recognizes, honours and interprets the province's cultural and historic treasures.

The Commemorations program is unique in that it recognizes not only provincially significant people, places and events, but also aspects of our living heritage, including tradition bearers and other facets of Newfoundland and Labrador's vibrant and living culture.

For more information on the program and this year's recipients, please visit the Heritage NL website:
<https://heritagenl.ca/>

Western Region

Grenfell Historic Properties: The Traditions Continue

The Grenfell Historic Properties continue to protect and preserve the Grenfell Legacy. Operated by the Sir Wilfred Grenfell Historical Society, the Grenfell Historic Properties are also the #1 attraction in the Town of St. Anthony.

Located on the Great Northern Peninsula, the Handicrafts Gift Shop is open year-round and has an ample supply of local artisans that sell their products to our shop. Grenfell Handicrafts continue to produce the Traditional Grenfell products, continuing with the tradition that started back in Dr. Grenfell's day.

The Grenfell Historic Properties is open weekdays during the winter and is located at 1 Maraval Rd., St. Anthony, NL. For more information, please visit their website: <https://grenfell-properties.com/>



Avalon Region

Hearts' Content Mizzen Heritage Society: Celebrating 30 Years!

2024 marks a very important anniversary for the Hearts' Content Mizzen Heritage Society. Founded in 1994, the society plans to celebrate 30 years of recognizing the wonderful and unique cultural heritage of Heart's Content. To mark this anniversary, the society thought it would be appropriate to honor some of the founders who started the society and laid the foundation which the organization continues to build on today.

At its annual Christmas party, the Hearts' Content Mizzen Heritage Society President Ed Arnott introduced a new annual award called "The Honorary Lifetime Membership Award". This award will be given to members who have contributed at least 10 years of service and have made a significant contribution to the society. Congratulations to the first winners of this new award: Bob Balsom, Alice Cumby and Claude Rockwood.

For more information on the Hearts' Content Mizzen Heritage Society and its anniversary celebrations, please visit their website: <https://mizzenheritagesociety.com/>

Avalon Region

Placentia Preservation Partnerships

Placentia Area Historical Society Partnering With
Placentia Parish Activities Society



The Placentia Area Historical Society (PAHS) recently announced that they have been working with the Placentia Parish Activities Society Inc (PPAS) to save an historic building in the community.

Thanks to their combined efforts, the former Sacred Heart Church and World War I monument standing on five acres of land has been purchased by the group.

The Placentia Area Historical Society was able to assist with this project through its mandate and charitable status designation. It doing so, it was able to accept contributions and issue official charitable tax receipts. As per Canada Revenue Agency regulations, all donations made were final and not refundable.

Once the purchase has been finalized, the PPAS will be the sole owners and will be responsible for the building, monument and land as well as its upkeep.

The mission of the Placentia Area Historical Society is to promote the study, knowledge and preservation of the history of the Placentia area. The society restored the O'Reilly House Museum, which opened to the public in 1989 and was designated a Registered Heritage Structure in 1999 by the Heritage Foundation of Newfoundland and Labrador. Located at 48 Orcan Drive, the museum is open seasonally for tours.

For more information on the PAHS, please visit: <https://placentiahistory.ca/>

For more information on the Placentia Parish Activities Society Inc please email: PPASINC@outlooks.com

COVER STORY

The 118 Year-old Clock in Carbonear Finally Restored!

In a heartwarming turn of events, the clock in the Old Post Office Museum in Carbonear has been successfully repaired after 60 years of silence. The Clock was first installed 118 years ago but has not been working for years. Thanks to the efforts of the Carbonear Heritage Society, the Town of Carbonear, and the unexpected arrival of a skilled clock repairer, the iconic timepiece is once again ticking away.

Back in May 2023, during a heritage meeting, Ms. Kerri Abbott, the Economic and Tourism Officer for the town, expressed her desire to see the old clock restored to its former glory. Town employee Steven Barrett had assessed the clock previously and believed it could potentially be repaired.

However, as time passed, the Chair of the Carbonear Heritage Society, Keith Thomas, ventured up into the clock tower, capturing several pictures of the dilapidated clock, which he shared on the society's Facebook page. The post quickly gained traction and caught the attention of an unexpected visitor.



Photo Credit: Carbonear Heritage Society



Photo Credit: Carbonear Heritage Society

Photo Above: The Old Post Office Museum in Carbonear.

Photo Left: Thanks to a social media post and the kind efforts of Yulia Veretennyyk, and her family, the clock in the Old Post Office Museum in Carbonear has been successfully repaired after 60 years of silence. When Julia saw the post on social media describing the repairs needed, she knew she had a solution for the Carbonear Heritage Society. As it happened, her mother, Liudmyla Pass, was moving to our province and knew how to repair clocks. Liudmyla Pass and her husband Oleksandr Pass are pictured here in the clock tower.

Continued

COVER STORY

The 118 Year-old Clock in Carbonear Finally Restored!

Yulia Veretennyk, now a resident of Chapels Cove, Newfoundland, originally from Ukraine, was touched by the post. She revealed that her mother, who was a skilled clock repairer, would be arriving in Newfoundland, seeking safety and a new life from the war in the Ukraine.

Yulia's mother, Liudmyla Pass, was particularly interested in helping restore the clock, using her expertise gained from repairing clocks in Ukraine. It was her way to thank Canada and Newfoundland for helping her and her family in time of need.

After a month of planning, Yulia's parents finally had the opportunity to examine the clock. Keith Thomas and Steven Barrett arranged a meeting, and during the inspection, Liudmyla Pass determined that the clock was fixable. Another appointment was scheduled, and after four hours of dedicated work, including a thorough cleaning, Pass successfully repaired the clock.

The Carbonear Heritage Society is overjoyed with the outcome. Through a fortuitous connection made online, the clock, which had remained silent, is now functioning as it did when it was first installed 118 years ago.



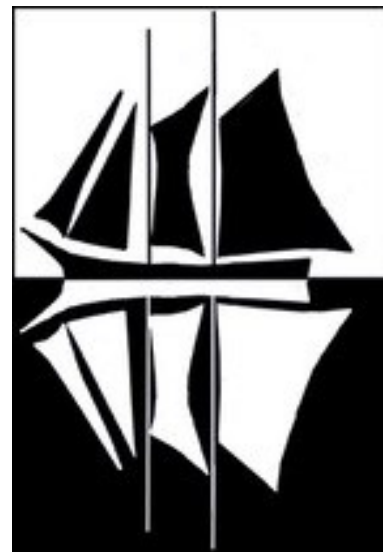
Photo Credit: Carbonear Heritage Society

This heartwarming story highlights the power of social media and the kindness of strangers. Yulia Veretennyk and her parents' generosity has not only restored an integral piece of Carbonear's history but has also forged a meaningful connection between two distant countries. The repaired clock will serve as a reminder of the resilience and unity that can be found even in the most unexpected places.

Keith C. Thomas
Chair, Carbonear Historic Society
Avalon Director, Museum Association of NL

Located at 182 Water Street, Carbonear, the Old Post Office Museum, serves as the Carbonear Heritage Society's office and archive. It holds many interesting artifacts that speak to the life and times of the Town of Carbonear and is open to the public on a seasonal basis. In 1988 the building was designated as a Registered Heritage Structure by the Heritage Foundation of Newfoundland and Labrador and it was recognized with a Southcott Award from the Newfoundland Historic Trust in 2008.

For more information on the Carbonear Heritage Society, please email: keithcthomas1967@gmail.com or visit: <https://carbonearheritagesociety.weebly.com/>



Landfall Trust: The Cottage at Freshwater - First Structure

The winter's snow was still on the ground when two brothers walked up a steep path from the Battery on the north side of Brigus to a flat piece of land that they had carved from the hillside the year before. One had a long saw balanced on his shoulder, the other carried an axe. They were out to build a small house on the narrow ledge overlooking the north end of Brigus Harbor.

The land was out of town, up a steep, narrow path high above the bay, with no place to build a wharf or to launch a ship. It was an unlikely place to set down a plantation, but then all the likely places were already occupied. From across the bay, it looked like an oasis in a rocky desert. It did have one advantage: two streams running cold and clear with the best water in Brigus. The brothers named the land Freshwater and started their own enterprise on the rocky ledge.



Photo: View of Freshwater/Landfall, with Kent Cottage nestled in the middle.

They felled trees from the sloping land below the house site and hauled the logs up the hill. They removed the bark and sawed the logs in half lengthways and flattened the outside. With the help of others from the community, the boys stood the half logs up on a stone foundation, carefully fitted them together with a hatchet, and chinked them with moss. The roof rafters and boards were sawn with the same long, two-man saw. It would take more than one hundred trees, stones from the nearby hillside, cartloads of ballast bricks for the two fireplaces, and a door and two windows to finish the house. But the Freshwater cottage was ready for habitation by the end of summer. The same elegant Georgian symmetry that they chose still exists in what we call Kent Cottage today. The most important thing was it provided shelter for a family before the onset of winter.

We don't know who the first residents were, how long they lived there, or how many children they raised within its solid wood walls, but more than two hundred years later, some of the logs that were cut and sawn on the hillside above the town are still standing, hidden inside the walls of Kent Cottage at Freshwater, now known as Landfall. Today, they are exposed in the attic and hidden behind the boards of a first-floor addition, physical evidence of the careful work done two centuries ago. The builders of this first house are unknown, as is the date of its construction. Perhaps it is as early as 1786, or as late as 1810. Perhaps it was the Norman brothers, or perhaps the Peabodys who sawed the first logs. What we do know is that this tiny cottage is one of the oldest buildings still standing in Newfoundland, and its history spans more than two centuries.

Kent Cottage is now a residency space for artists, musicians and writers. The road is covered with snow until the spring, and our first resident usually comes in June. We will work on restoring the windows in the spring before our first resident, and after our last resident leaves in the fall.

Rex Passion,
V. P. of Facilities, for Landfall Trust & Kent Cottage
Brigus, Newfoundland & Labrador

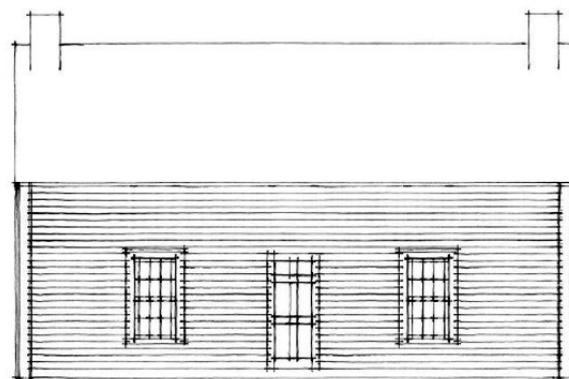


Image Above: Drawing by Architect Philip Pratt showing the how the original cottage might have looked. We have no evidence that it was covered with clapboards as the drawing suggests and no idea of what material covered the original roof. Later, the cottage was expanded and a bay added to the east (right side in the drawing) and the roof was lifted, giving a second story.

All images submitted by Landfall Trust.

Congratulations O'Brien Farm Foundation!

Winners of the National Trust for Canada's Governors' Award

On October 2023, the O'Brien Farm Foundation was honored to receive a National Trust for Canada's Governors' Award. Given out annually to initiatives contributing to community, identity, and sense of place, the foundation was honored for its restoration work on Thimble Cottage as an example of how heritage places can be used and preserved while addressing contemporary needs.

The O'Brien Farm was established in the early 19th century, and was part of a community of Irish family farms on Mount Scio in an area known as the Freshwater Valley. For close to 200 years, the O'Brien's used their land as a dairy, vegetable farm, pastureland, and managed forest. Originally built for a family member as a summer home in 1854, Thimble Cottage became the O'Brien family's full-time residence in 1875.

Despite encroaching urban development and steep competition from out-of-province grocers, the O'Brien's were determined to keep their farm; not just for themselves, but for generations to come. By the end of his life, Aly, the last surviving member of the family, had turned Thimble Cottage and the surrounding farm into a destination for discussions on Newfoundland's distinctive heritage, with lectures and music reflecting his family's historic attachment to the land and its Irish roots. Following his death, the O'Brien Farm Foundation was established in 2011 with a mandate to preserve the property, promote Newfoundland and Labrador's unique cultural heritage, and support our province's next generation of farmers.

Today, the O'Brien Farm continues to be a hub for cultural and agricultural learning. Through our New Found Farmers program, we are still a working farm and support 8 new-entrant farmers as they work to grow their businesses. We strive to tell the O'Brien family's story through our exhibit in our Interpretation Centre, tours of the property, and accompanying workshops, educational programs, and special events. Thimble Cottage is home to a museum space on the O'Brien family's story, and is regularly home to visitors and program participants. Though much has changed since the O'Brien's last lived here, the farm is still a place for learning and growing.

Mackenzie Collett
Heritage Programming Officer
O'Brien Farm Foundation

Editor's Note: The O'Brien Farm Foundation is located at 150 Oxen Pond Road, in St. John's, Newfoundland and Labrador and is open to the public on a seasonal basis and by appointment during the winter. For more information on the community garden, programs, & facilities, please call 709-576-6882, email info@obrienfarm.ca, or visit: <https://www.obrienfarm.ca/>



Photo Credit: O'Brien Farm Foundation

What will it take to preserve Cape Ray's shipwreck? Documentation, and non-stop salt water

Written by: Jessica Singer, CBC News - Posted on: March 03, 2024; Reprinted with permission of CBC News

Maritime archaeologist says ship could likely last on beach for a few decades

The shipwreck that unexpectedly appeared along Newfoundland's southwestern tip in late January has captured the imagination of people across the globe, especially residents who live near the site, who are now scrambling to preserve the remnants of the ancient vessel.

Preserving the overturned hull in a museum would be costly given how large it is — perhaps hundreds of thousands, if not millions of dollars, says the Shipwreck Preservation Society of Newfoundland and Labrador.

But there are ways to keep the historic ship in the community for a few more decades; it'll just require thorough documentation and a lot of salt water, said James Delgado, the former director of maritime heritage for the National Oceanic and Atmospheric Administration.

"Document as best you can, save what you can," said Delgado. "And with that perhaps ... give people a sense, walking on a beach outside of a surfline, that here is a ghost from the past unearthed from its grave that perhaps has a story to tell."

Delgado said there are a few approaches to preserving shipwrecks that aren't able to make it into a museum. One is to tag the ship, note where it is in the water, and let it drift naturally.

The other is to bring the structure high above the surfline so passersby can get a glimpse of the past, said Delgado. It's a process local residents and divers are working diligently to achieve, said Neil Burgess, the president of the Shipwreck Preservation Society. Community members have launched an online fundraiser to raise money that would allow them to recover, transport and preserve what they are calling a "unique piece of history."

Burgess said the ship has been pummeled in the surf, and as the waves continue to hit the wreck, pieces of the hull are becoming loose and could eventually tear parts of the structure apart. A bulldozer or excavator would need to pull the hull out, he said, which has become heavy with water. The longer that takes, the less of the ship there will potentially be to pull out, he said. "It's kind of a race against time at this point," he said.

If residents are able to bring the ship away from the surfline, the next step to preserving it is to keep it wet with salt water, a piece of the process Delgado says is "absolutely critical."

If the vessel has been buried for over a century and a half, which Delgado says is likely, it'll be saturated with water, and the wood's composition will have changed from such a long soak. Once it dries, the wood will splinter, with the extent of the splintering dependent on the materials used in the ship.

Delgado said people should throw buckets of water on the ship every day to keep it from drying out. The ship also shouldn't be brought indoors if it's not going to be preserved at a museum standard, because once it's out of the humidity and the moisture of salt air, the ship will dry and break apart.

"We've often left these in place on beaches all over the world because this phenomena, particularly as climate change is here and as beaches are now getting hit with heavy erosion, more and more of these ghosts from the past are emerging from the sand," he said.

Delgado says it's hard to tell how long the structure will last if it's kept wet on the shore, but it's entirely possible that if it's out of the way of the surfline, it could last for a few decades, he said.

"Let's be clear: inevitably all things go and break apart," said Delgado. So the best thing people can do is keep the ship intact as best they can, touch it, take samples and continue to try to learn more about its makeup and origins.

(Continued on page 12)

What will it take to preserve Cape Ray's shipwreck?

(Continued from page 11)

That's why, says Delgado, another crucial step is for residents to document the ship — take photographs, measure its parts, get a detailed drawing of the ship to scale, and mark the wooden trunnels, pins that fasten the wood together.

Delgado says people have also begun to virtually preserve ships using cameras or lidar, a way to measure ranges using lasers. Provincial archaeologist Jamie Brake told CBC News he and other experts have collected a number of samples, including copper rods, wood and mortar to learn more about the ship, including its age and origin.

Brake told reporters that experts don't have enough information to indicate whether the ship is a unique specimen, and without an in-depth analysis of the samples from the vessel, Burgess says it's too early to sign off on its significance or a lack thereof.

Thousands of ships, likely similar to the one in Cape Ray, were built in the 19th century, said Delgado, as tradeways became global, connecting places such as Newfoundland and Labrador to the rest of the world. Ships were likely as common as freight trucks are today, he said.

But that doesn't take away from a shipwreck's novelty.

"I think too many times we get hung up on the concept of uniqueness or originality," said Delgado.

What makes ships important is what they meant to families and communities, he said, and the way they shaped towns and environments. More needs to be gleaned from the ship's samples through archaeological study, and hopefully, the community of Cape Ray will be able to keep the ship on the shore for people to look at and learn from for years to come.

"The importance would not be that it's unique, but that it speaks to something now gone that was once so common," he said. "It's not the famous people, it's not the ones whose names show up in the history books. What makes history is the rest of us who get up and go to work every day and in a case of something like this, those who got up to go to work and had to go to sea, knowing that there was no guarantee, perhaps, that they'd be able to come back."

MANL would like to express our sincere thanks to CBC News and to the author for their kind permission to reprint this article. Written by Jessica Singer, CBC News. Posted March 03, 2024. To view the original article on-line, please visit: <https://www.cbc.ca/news/canada/newfoundland-labrador/cape-ray-shipwreck-preserve-nl-1.7131493>



THE FUTURE IS | L'AVENIR C'EST LA
COLLABORATION

CMA National Conference

MANL Membership Notes

MANL Digital Needs Assessment Survey Reminder



There is still time to take our Digital Needs Assessment Survey! The survey will remain open until March 31, 2024 and we need to hear from all of our members! Please tell us about your museum or organization's online presence, use of social media, and what you might like to learn about using digital technology in your work. MANL wants to expand our digital presence and to help our members do that, too! The survey is completely anonymous and will only take 10 minutes to complete. Just visit MANL's website and click on the Digital Needs Survey Link.

It's Membership Renewal Time!

MANL Membership Year: April 1, 2024 – March 31, 2025

It's almost time to renew your MANL membership! This fiscal year, our members will welcome some changes to the membership renewal process, including the introduction of electronic payments. Additional information on the renewal process, including online forms, will be forwarded to all MANL members shortly.

Membership renewal information will also be mailed to MANL members, and the option of paying by cheque will still be available for those who prefer that option.

The annual fee for an institutional membership is \$60.00. This membership category is suitable for any organization, including museums, heritage societies, galleries, aquaria, nature reserves, etc. interested in the preservation and promotion of our natural and cultural heritage.

The annual fee for an individual membership is \$25.00. This membership is suitable for an individual person who is interested in the preservation and promotion of our natural and cultural heritage. For more information on MANL Memberships, please visit MANL's website.

**ADVERTISE WITH
MANL**

Museum Association of Newfoundland and Labrador NEWSLETTER ADVERTISING RATES 2023-24

RATES PER ISSUE

MANL MEMBERS

Full Page: \$120
Half Page: \$70
Quarter Page: \$40
Business Card: \$20

NON-MEMBERS

Full Page: \$130
Half Page: \$85
Quarter Page: \$45
Business Card: \$30

AD DIMENSIONS

Full Page: 7 $\frac{1}{8}$ "W X 9 $\frac{1}{2}$ "H
Half Page: 7 $\frac{1}{16}$ "W X 4 $\frac{3}{4}$ "H
Quarter Page: 3 $\frac{1}{2}$ "W X 4 $\frac{3}{4}$ "H
Business Card: 3 $\frac{1}{2}$ "W X 2 $\frac{1}{2}$ "H

(709) 722-9034
manl@nf.aibn.com
museumsnl.ca
@MuseumsNL
@manltweets
@museumsnl



MANL Membership Notes

MANL Environmental Monitoring Equipment Loan Program

ATTENTION MANL MEMBERS!

Specialized equipment such as light meters, temperature and relative humidity meters, and data loggers are available for you to borrow for a fixed period in order to monitor their museum environment. Please contact the MANL office for more information.

This monitoring equipment can be useful in helping to determine regulatory environmental levels, as well as give the museum more knowledge into the effects the surrounding environment has on artefact collections.

THESE DEVICES RECORD:

- RELATIVE HUMIDITY
- TEMPERATURE
- LIGHT INTENSITY



MANL can also provide consultation with museums on how to regulate environmental controls.

THE MANY BENEFITS OF MEMBERSHIP

MANL Website Listing:

MANL created a new website in 2021 to promote and serve its membership and includes an online listing of its institutional members. Members should update their site listing every year. Please contact the MANL office for more information. The address for MANL's website is: <https://museumsnl.ca>

CMA Bursary Program:

The Canadian Museums Association offers three types of bursaries to assist museum professionals in the following areas:

1. Conference Professional Development
2. Emerging Professional Development
3. Mid-Career Professional Development

MANL members can avail of these programs. For more information on the program contact the CMA (www.museums.ca).

MANL Disaster Loan Fund:

MANL offers an emergency loan of up to \$10,000 to member museums experiencing a disaster with their collections. This repayable loan is designed to provide immediate financial assistance to MANL members. The MANL disaster loan can be used by museums affected by disasters of any magnitude however, MANL reserves the right to assess each individual case for eligibility. This loan is intended to provide immediate funds that would be repaid to MANL by the museum.

MANL Membership Discounts:

In addition to receiving discounts on training programs and workshops, MANL members also receive free admission to some local museums.



STAY IN TOUCH WITH MANL!

SUBSCRIBE TO MANL's WEEKLY MUSEUM ANNOUNCEMENTS!

Want to stay up to date on museum employment opportunities, funding announcements and other important Museum news? Subscribe to MANL's weekly museum announcements today! You don't need to be a member of MANL to subscribe. [Just visit MANL's website to subscribe.](#)

WHAT'S HAPPENING

At Your Museum / Heritage Society?

Contact MANL with the details of your upcoming events!
Call (709) 722-9034 or E-mail: manl@nf.aibn.ca

TAG MANL ON SOCIAL MEDIA!

Tag us on Social Media and we will share your posts!
Facebook: @MuseumsNL Twitter: @manltweets

HASHTAG #MuseumsInNL

MANL Professional Development

PROFESSIONAL DEVELOPMENT WORKSHOPS

PHASE BOX AND ENCAPSULATION

INSTRUCTOR: JOHN GRIFFIN

MARCH 15, 2024 | 9 AM – 3 PM

182 WATER STREET, CARBONEAR, NL

MARCH 25, 2024 | 9 AM – 3 PM

7 SCOTT AVENUE, GRAND FALLS, NL



PROFESSIONAL DEVELOPMENT WORKSHOP

INTRODUCTION TO MUSEUM GOVERNANCE AND MANAGEMENT



INSTRUCTOR: LARA MAYNARD

MARCH 23-24, 2024 | 9 AM – 4 PM

7 SCOTT AVENUE, GRAND FALLS, NL



MIDDAY MUSEUMS

Let's Talk About CEDP Funding!



WITH ANNE MADDEN

TUESDAY, MARCH 26 | 12:00 PM | VIA ZOOM



PROFESSIONAL DEVELOPMENT WORKSHOP

INTRODUCTION TO PREVENTATIVE CONSERVATION

INSTRUCTOR: MIKI LEE

APRIL 27-28, 2024

200 MILITARY ROAD, ST. JOHN'S, NL

